

SPEAKING

7 A Read about the different types of people in the Myers-Briggs test below. Which type are you more inclined to be like? Choose a letter for each section (I or E, N or S, T or F, J or P) to work out your profile, e.g. ENTJ.

B Turn to page 158 to read more about your profile. Do you agree with the description?

C Tell other students about the result of your test, what it says about your personality and whether you agree with the result.



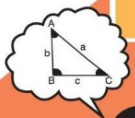
I Introvert

Enjoys spending time alone.
Tends to think first, act later.

or

E Extrovert

Finds being with others relaxing.
Tends to act first, think later.



N Intuition

Likes to change things and find their own solutions to problems.
Looks to the future and tends towards idealism.

or

S Sensing

Uses the practical information around them to solve problems.
Enjoys the present and tends towards realism.



T Thinker

Makes decisions using objectivity and logic.

or

F Feeler

Decides by listening to their own and others' feelings.



J Judging

Approaches life in a structured way, making plans and organising things.



or

P Perceiving

Finds structure limiting, likes to keep their options open and go with the flow.



VOCABULARY PLUS

IDIOMS FOR PEOPLE

8 A Work out the meanings of the idioms in bold.

- 1 He's a bit of a **yes-man**. He agrees with anything the boss says.
- 2 The new engineer knows what he's doing. He's a real **whizzkid**.
- 3 She knows everything about everyone. She's the office **busybody**.
- 4 There is never a quiet moment with Kate. She's a real **chatterbox**.
- 5 It was very annoying of him. Sometimes Joe could be a real **pain in the neck**.
- 6 She is a **dark horse**. I didn't know she was rich.
- 7 He's had plenty of experience. He's an **old hand** at the job.
- 8 My grandmother has the same routine every day. She's very **set in her ways**.
- 9 Jack is a rebel. He's the **black sheep** of the family.
- 10 I'm glad we've invited Sinead. She's always the **life and soul of the party**.

B Work in pairs. Which of the idioms in Exercise 8A would you use in the following situations?

- 1 You have suggested a new way of working, but your colleague is reluctant to change the way he does things.
- 2 You feel sure that you can trust the person you have asked to do this particular task because he has done it many times before.
- 3 Your friend loves talking.
- 4 You discover that your colleague is the lead singer in a successful band. She has never mentioned it.
- 5 You have to complete your accounts by tomorrow. You hate doing it.
- 6 Your young nephew shows you how to play a new computer game. He has already applied to work as a games developer.
- 7 Your postman is always asking questions about your private life.
- 8 You always invite your sister when you're having a party, because she makes people laugh.

speakout TIP

Here are four ideas to help you remember idioms.

- 1 Translation – are any of the idioms in Exercise 8A the same in your language?
- 2 Group by topic – do you know any other idioms for describing personality?
- 3 Visualise – can you think of images to help you remember the idioms in Exercise 8A?
- 4 Personalise – can you use the idioms in Exercise 8A to talk about people you know?

C Can you think of anyone from your own life, or news/film/television or politics, that could be described by the expressions in Exercise 8A?

▷ page 148 **VOCABULARYBANK**

Lesson 1.2 PERSONALITY

1 A Find pairs of opposite adjectives in the box.

considerate circumspect conservative temperamental impetuous
easy-going gregarious selfish liberal introverted

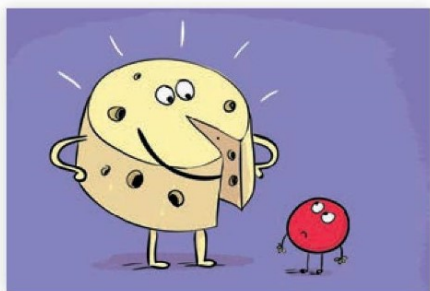
B Match the adjectives in the box with statements 1–10.

- 1 She expects everyone to help her, but she never does anything for anyone else!
- 2 My boss is happy one minute and screaming the next.
- 3 The manager doesn't like new ideas; he wants to do everything the old way.
- 4 That child talks to few people; he prefers to sit quietly and read or just think.
- 5 That girl is so relaxed that she never seems to worry about anything.
- 6 She's very cautious; she thinks carefully before she decides to do something.
- 7 She's tolerant and she wants her employees to be free to do what they want.
- 8 That man makes too many instant decisions without thinking about the consequences.
- 9 When he sees me, he always brings a gift and asks about my family.
- 10 She loves socialising; she goes to parties every night.

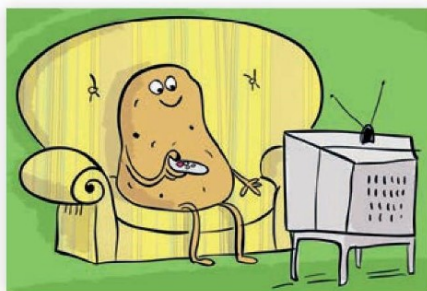
C Can you think of people (friends, famous people, fictional characters) who match the adjectives above?

Lesson 1.2 IDIOMS FOR PEOPLE

1 A Read sentences 1–6 and look at the pictures. How could you complete the idioms?



- 1 She has a lot of power. In that organisation she's a ...



- 2 He must be the laziest person I've ever met. He's a total ...



- 3 She sometimes gets out of control. She's a bit of a ...



- 4 He ruined the company's reputation. He was a ...



- 5 She broke her arm and still refused to give up. She's a ...



- 6 He complains whenever we try to have fun. He's a bit of a ...

B Check your ideas. Match idioms a)–f) in bold with sentences 1–6 above.

- a) **rotten apple**: one bad person who has a bad effect on all others in the group
- b) **loose cannon**: an unpredictable person who may cause damage if he/she is not controlled
- c) **couch potato**: a person who lives a sedentary lifestyle, never doing any exercise
- d) **wet blanket**: a negative person who ruins other people's good times
- e) **big cheese**: an important, influential person
- f) **tough cookie**: someone who is strong enough to deal with difficult or violent situations